

The best readability of codes is on the light colored wristbands:



Check the printed code by the scanner



TYPE 128 (alphanumeric)

- rolling code
- code 128 A - the more signs the longer the code
- possibility to encode the numbers (digits 0 -9) and alphabetic characters (letters A - Z)
- max. 10 characters (max 9 variable signs)
- printingmethod: digital

128 A
long code
(characters and digits)



128 C
short code
(only digits)



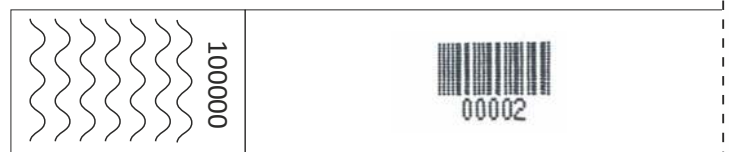
TYPE 2/5 (numeric)

- rolling code
- possibility to encode the numbers (digits 0 -9)
- max. 10 characters (max 9 variable signs)
- printingmethod: digital

without control digit (even number of digits)



with control digit (uneven number of digits) – 5 digits



with control digit (uneven number of digits) – 7 digits



TYPE EAN 13 (numeric)

- permanent code
- combination of 13 digits
- printingmethod: digital



TYPE 2D Semacode (matrix code)

- fixed code / rolling code
- possibility to encode fixed texts
- possibility to encode the numbers (digits 0 -9)
- Possibility of independent coding fixed code + variable counter
- printingmethod: digital



TYP QR (matrix code)

- permanent code (screen printing),
- rolling code:
 - LASER on TAG
 - digital printing on tyvek wristbands and vinyl (tyvek wristbands only white color)

PERMANENT QR CODE - SCREEN PRINTING



ROLLING QR CODE - DIGITAL



Tyvek wristband colors:



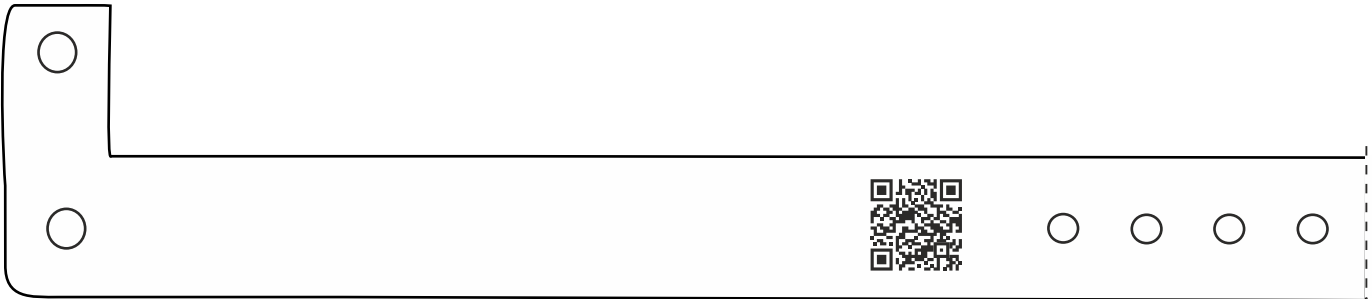
The wristbands have a colorless base, 55 mm wide



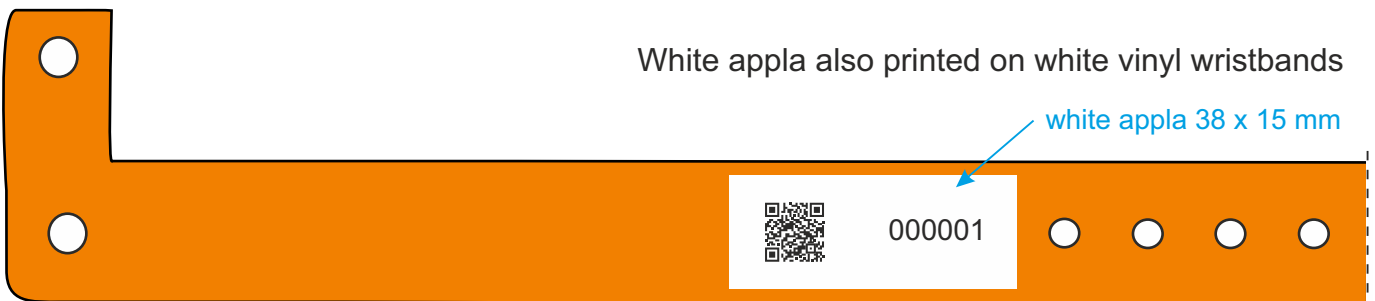
Tyvek wristband colors:



PERMANENT QR CODE - SCREEN PRINTING



ROLLING QR CODE - DIGITAL



PERMANENT QR CODE - LASER



ROLLING QR CODE - LASER

